

Model IFR (instrument filter regulator)

Filter / regulator combination

All 316 stainless steel

High flow capability

Max inlet pressure 290 psi (20 bar)

Maintains set pressure with increasing flow

Fully venting

Reliable and long life, ideal for one time installation

Technical data

Filter with manual drain:
40 - 50 μm - stainless steel
20 - 30 μm - stainless steel
5 - 10 μm - stainless steel

Relief port:
2 mm drilled hole

Maximum inlet pressure:
290 psi (20 bar)

Outlet pressure range:
7 - 87 psi (0.5 - 6 bar)
7 - 145 psi (0.5 - 10 bar)
7 - 232 psi (0.5 - 16 bar)

Temperature ratings:
Standard =
Media: -22° to 194°F (-30° to 90°C)
Ambient: -22° to 194°F (-30° to 90°C)
Low temperature range =
Media: -67° to 194°F (-55° to 90°C)
Ambient: -67° to 194°F (-55° to 90°C)

Process connections:

IFR3 - 1/4" NPT
IFR4 - 1/2" NPT

Media:
Air, and neutral gases
(Contact Norgren for other media)

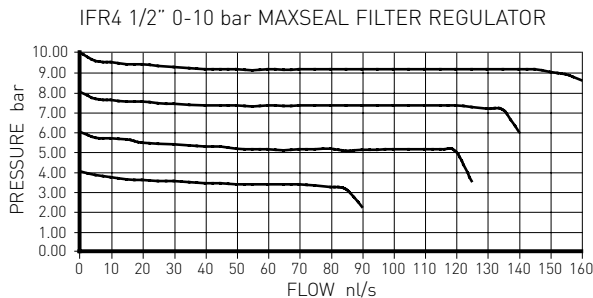
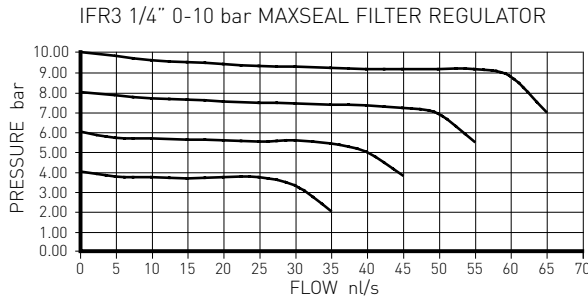
Weight:
IFR3 - 1.8 kg
IFR4 - 2.2 kg

ATEX classification:
Exc - complies with EN13463 for non-electrical equipment

Materials

Valve body - stainless steel - 316L
Top & bottom covers - stainless steel - 316
Valve trim materials - 316L stainless steel
O-rings & seals - nitrile (NBR)
Diaphragm - nitrile (NBR)
Seat & adjustment springs - stainless steel

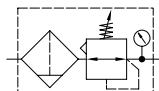
Flow rates 232 PSI (16 bar Inlet) Pressure drop shown as a % of Outlet Flow



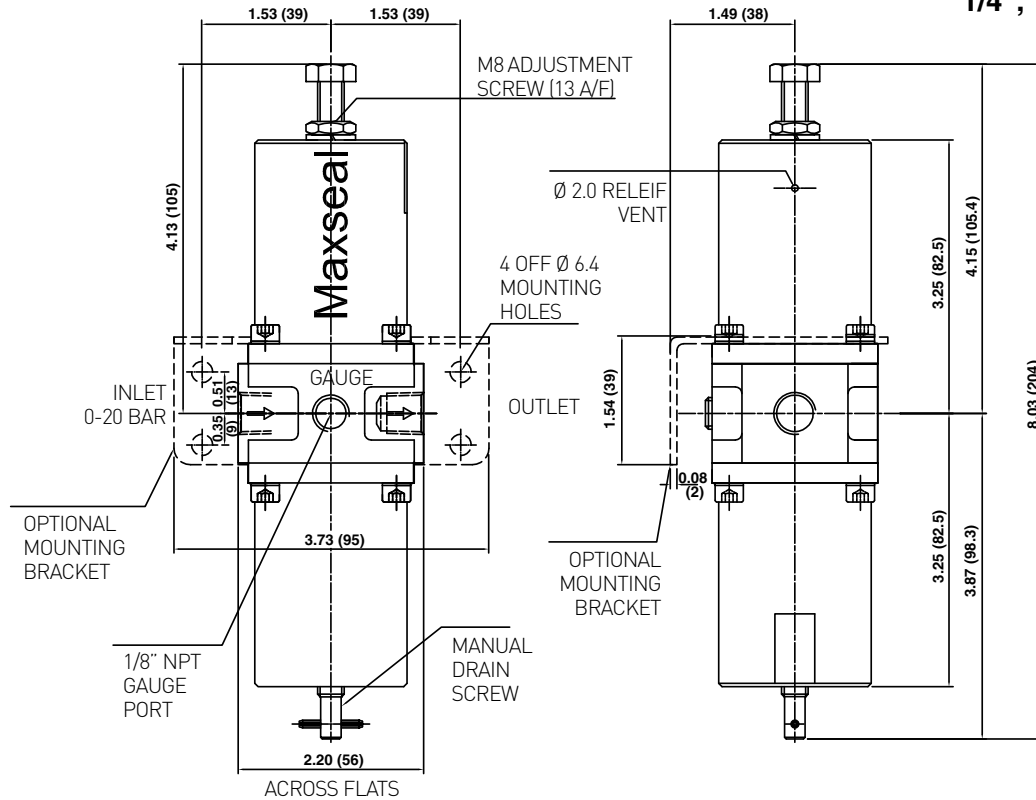
Option selector*

* Preferred options in **BOLD>**

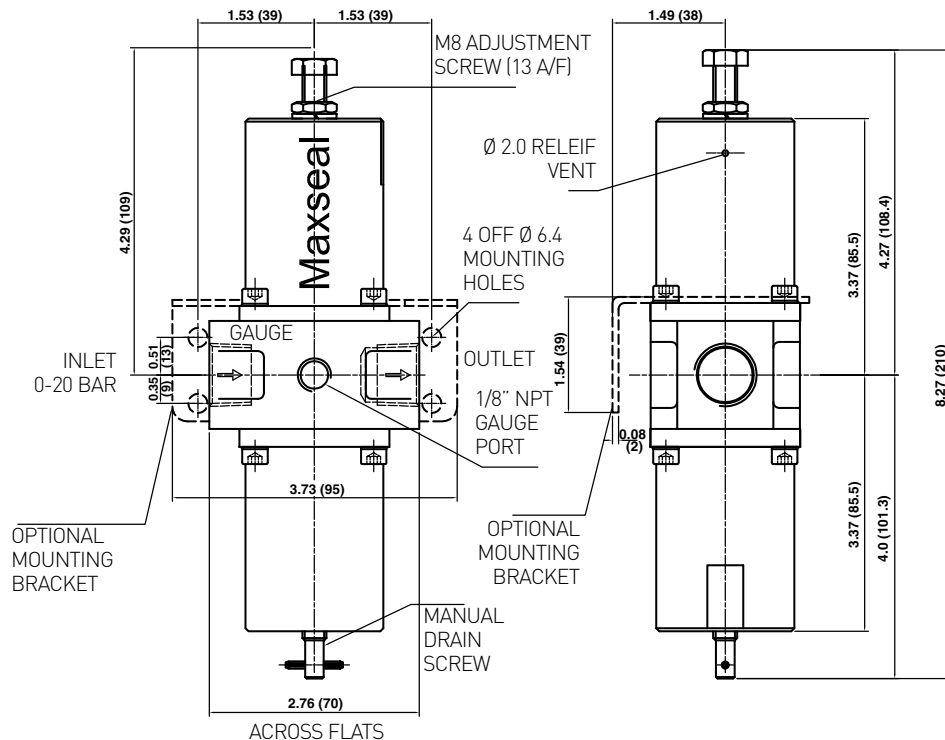
Option	Substitute	Option	Substitute
Outlet pressure PSI (bar)	Substitute	Filtration	Substitute
7 to 87 (0.5 - 6.0 bar)	6	40-50 μm	040
7 to 145 (0.5 - 10 bar)	A	20-30 μm	020
7 to 232 (0.5 - 16.0 bar)	B	5-10 μm	005
Drain type	Substitute	Mounting	Substitute
Manual drain	C	Mounting bracket	B
Automatic drain	A	None	N
Process conn.	Substitute	Gauge	Substitute
1/4" NPT	A1	None	0
1/4" BSPP	E1	304/316SS dry gauge	1
1/2" NPT	A3	304/316SS oil-filled gauge	2
1/2" BSPP	E3	316/316SS dry gauge	4
		316/316SS oil-filled gauge	5
		Seat/seal materials	Substitute
		Nitrile	H
		Viton®	V
		Low temp variant	L



IFR3 - 1/4" Filter regulator combination



IFR4 - 1/2" Filter regulator combination



Profile and dimensions inches (mm)

Warning

These products are intended for use in industrial compressed air systems only. Do not use these products where pressures and temperatures can exceed those listed under Specifications. Before using these products with fluids other than those specified, for nonindustrial applications, life-support systems, or other applications not within published specifications, consult NORGREN. Through misuse, age, or malfunction, components used in fluid power systems can fail in various modes. The system designer is warned to consider the failure modes of all component parts used in fluid power systems and to provide adequate safeguards to prevent personal injury or damage to equipment in the event of such failure modes. System designers must provide a warning to end users in the system instructional manual if protection against a failure mode cannot be adequately provided. System designers and end users are cautioned to review specific warnings found in instruction sheets packed and shipped with these products. System designers should also provide for all OSHA requirements including Title 29 CFR 1910.147 Lockout/Tagout. It should be recognized that warnings are valid for any product, regardless of manufacturer, and are not restricted to products manufactured by NORGREN. NORGREN's reputation for product quality and performance is well established. We feel we have the additional obligation to provide information or warnings to customers to assist them in applying our products in a reasonable and safe manner.

Warranty

Items sold by NORGREN are warranted to be free from defects in materials and workmanship for a period of two year from the date of manufacture, provided said items are used according to NORGREN's recommended usages. NORGREN's liability is limited to the repair of, refund of purchase price paid for, or replacement in kind of, at NORGREN's sole option, any items proved defective, provided the allegedly defective items are returned to NORGREN prepaid. The warranties expressed above are in lieu of and exclusive of all other warranties. There are no other warranties, expressed or implied, except as stated herein. There are no implied warranties of merchantability or fitness for a particular purpose, which are specifically disclaimed. NORGREN's liability for breach of warranty as herein stated is the exclusive remedy, and in no event shall NORGREN be liable or responsible for incidental or consequential damages, even if the possibility of such incidental or consequential damages has been made known to NORGREN. NORGREN reserves the right to discontinue manufacture of any product or change product materials, design, or specifications.